

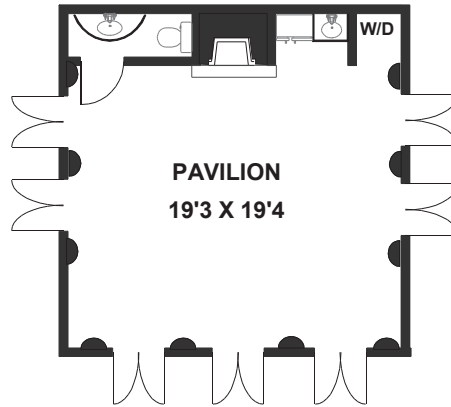


1133 Arden Rd., Pasadena



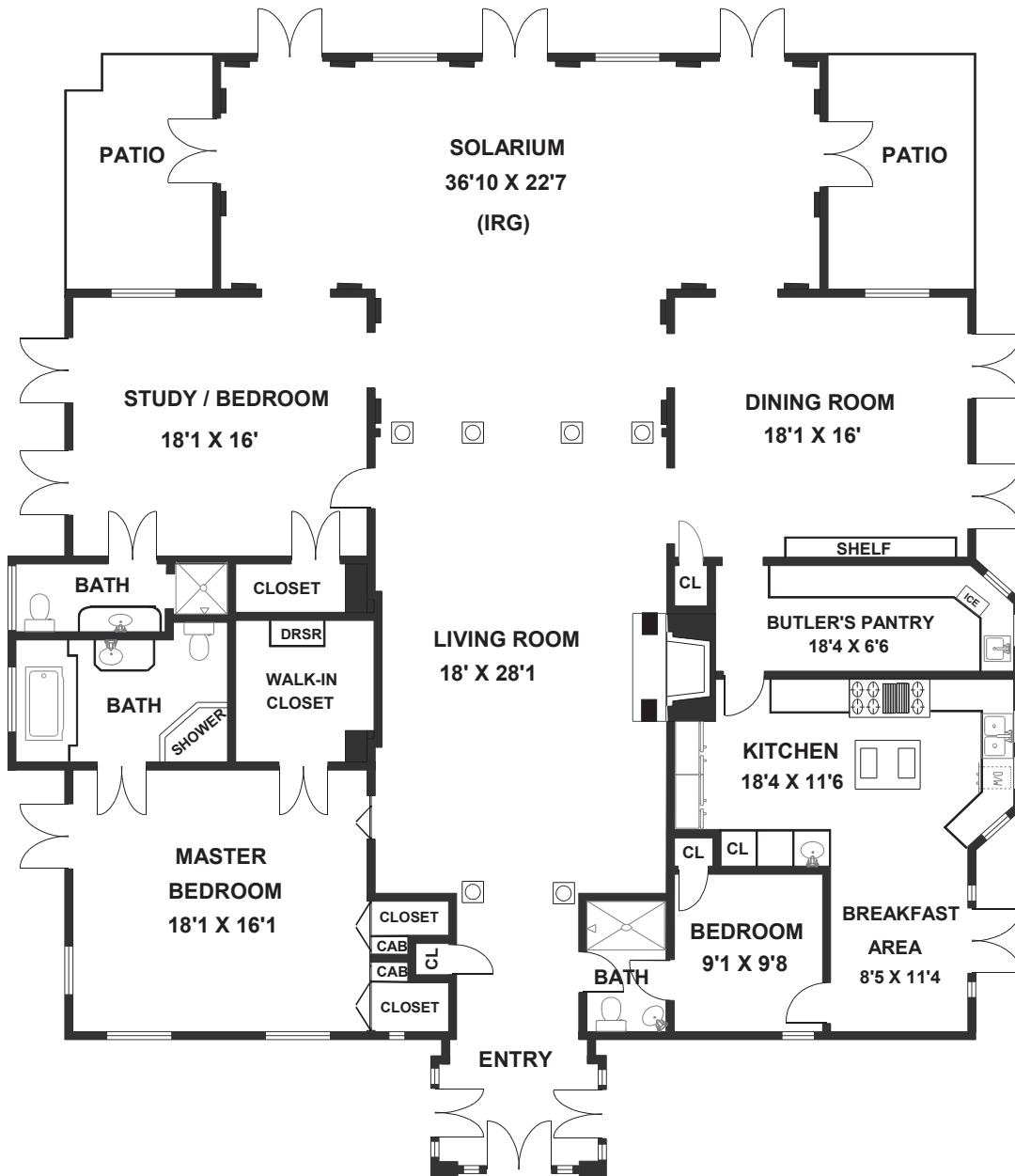
Prestigious Arden Rd. offers a rare and exciting opportunity for a lucky buyer! The current owners couldn't decide between remodeling or tearing down and building new so the choice awaits you. Built in 1948, the house is Neo-Classic in design and has incredible arches, columns and unique architectural touches. There are multiple fountains around the property, as well as a guest pavilion. A large lot has plenty of room for a pool. There is currently no flooring in place and most cabinetry and fixtures have been removed. The house may only be toured at this point from the exterior.

*Price Available
Upon Request*



Tia Rowland
 (626) 685.1114
www.HomesByTia.com

APN: 5327-012-022
 House size: 3317 (Taped)
 Pavilion size: 413 (Taped)
 Lot size: 19,528 (Assessor)



FLOOR PLAN CREATED BY REST. INFORMATION DEEMED RELIABLE, BUT NOT GUARANTEED. (626)-840-1717



Prudential Pasadena CA is a Division of Prudential California Realty. We are proud to be a member of HomeServices of America, Inc., an affiliate of Berkshire Hathaway. Prudential Pasadena CA does not guarantee the accuracy of square footage, lot size or other information concerning the condition or features of property provided by the seller or obtained from public records or other sources, and the buyer is advised to independently verify the accuracy of that information through personal inspection and with appropriate professionals. This is not intended as a solicitation if your property is currently listed with another broker. California DRE # 00543041