

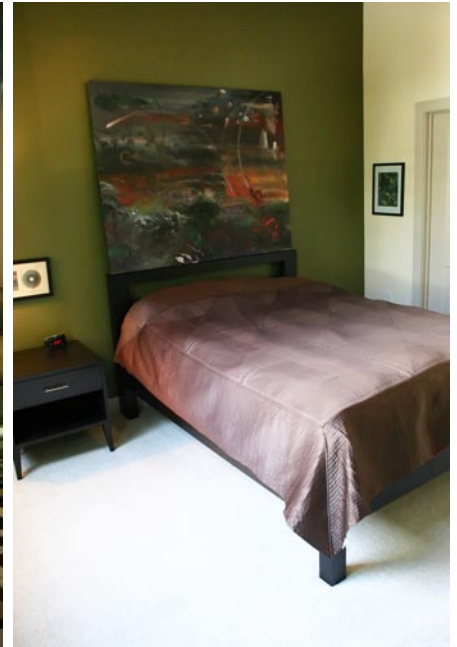
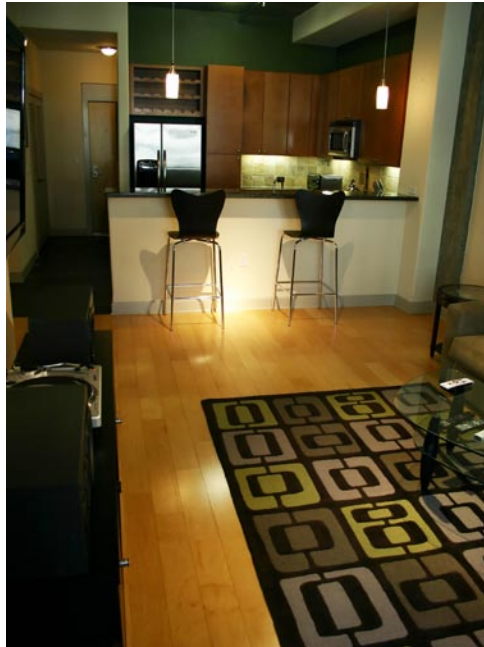
TIA ROWLAND
 626.685.1114
WWW.HOMESBYTIA.COM

Bedrooms: 1
 Baths: 1
 Condo square footage: 837 (Assessor)
 APN: 5734-038-048

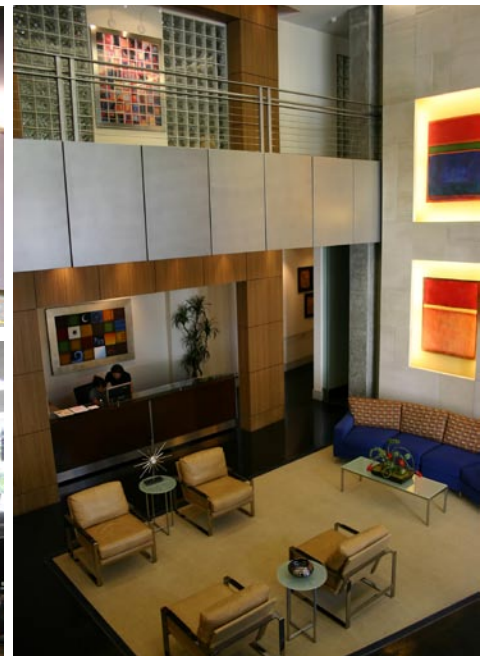
Offered at:
\$475,000

Welcome to this contemporary loft-style condo in the exclusive Prado. High ceilings, exposed ducting and dramatic architecture promote an urban East-coast feel. Facing Green St., majestic trees let the outside in while guaranteeing your privacy. A generously sized living/dining room with wood flooring flows into a modern kitchen with granite counters, slate tile backsplash, polished slate flooring, breakfast bar and stainless steel appliances. The bathroom has a generous oval tub, dual sinks, separate glass-enclosed shower and huge walk-in closet. Laundry is inside the unit and includes full-size appliances. Amenities include a Clubhouse, Fitness Center, Internet Café with plasma TV's, Business Center, Movie Theater with seating for 20, resort-style pool with sun-deck and BBQ, 24 hour Concierge Service, gourmet club kitchen and resident entertainment lounge, controlled security access and gated parking. HOA dues are \$635/per-month. Close to theatres, shops, and restaurants.

UNIT #308



PRADO



Prudential Pasadena CA is a Division of Prudential California Realty. We are proud to be a member of HomeServices of America, Inc., an affiliate of Berkshire Hathaway. Prudential Pasadena CA does not guarantee the accuracy of square footage, lot size or other information concerning the condition or features of property provided by the seller or obtained from public records or other sources, and the buyer is advised to independently verify the accuracy of that information through personal inspection and with appropriate professionals. This is not intended as a solicitation if your property is currently listed with another broker.